

# ANTON UNIFORMS

905 N. Scottsdale Rd • Tempe, AZ 85281 • 480-968-6636



Shop now at our website! >>>  
AntonUniforms.com



Featuring full school collections and helpful resources like our Sizing & Fit Chart and our Suggested Shopping Guide!

## CANDEO PEORIA UNIFORM GUIDE for 2023-24

### Female, grades: K-8 POLO SHORT SLEEVE



**Grades K-5:** Light Blue, Navy, White

**Grades 6-8:** Navy, Red, White

Youth XS-XL \$23.95  
Adult S-XL \$28.95

Includes school crest

### Female, grades: K-5 PETER PAN BLOUSE



White Short Sleeve with Collar  
No Patch  
Can only be worn with Jumper

Youth XXS-L \$20.95

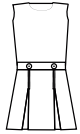
### Female, grades: K-5 PETER PAN BLOUSE



White Long Sleeve w/ Collar  
No Patch  
Can only be worn with Jumper

Youth XXS-XL \$22.95

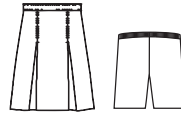
### Female, grades: K-5 JUMPERS



Jumper with Kick Pleat  
Length must be at the knee

Navy Sizes 3-14 \$40.95  
Plaid Sizes 3-12 \$47.95

### Female, grades K-8 SKIRT + BIKE SHORTS



Plaid Skirt, Navy Shorts  
Adjustable Waist

Youth Shorts \$13.25  
Adult Shorts \$16.25

Length must be at the knee  
Guaranteed for 1 full academic year

Skirt Sizes 3-18 \$47.95  
Skirt Sizes 7-18H \$49.95

### Female, grades: K-8 SKORTS



Navy, Khaki with Double Pleat  
Sizes 3-18 \$39.95  
Sizes 6-10H \$41.95

Plaid with Stitch Down Pleat  
Sizes 3-18 \$49.95  
Sizes 6-14H \$52.95

Length must be at the knee

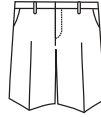
### Female, grades: K-8 CARDIGAN



Navy Fine Gauge Crewneck  
Includes school crest

Youth XXS-XL \$43.95  
Adult S-XL \$47.95

### Female, grades: K-8 SHORTS



Navy, Khaki Plain Front Shorts

Regular or Slim 3-6X \$27.95  
Regular or Slim 7-16 \$27.95  
Size 6H-18H \$29.95

### Female, grades: K-8 PANTS



Navy, Khaki Plain Front

Regular or Slim 3-6X \$30.95  
Regular or Slim 7-16 \$30.95  
Size 6H-18H \$32.95

### Female, grades: K-8 OXFORD



Long Sleeve Full Button  
Includes school crest

**Grades K-5:** Blue\* Special Order  
**Grades 6-8:** White, Blue

Youth 14-20 \$32.95  
Adult XS-XL \$34.95

### Male, grades: K-8 OXFORD



Long Sleeve Full Button  
Includes school crest

**Grades K-5:** Blue\* Special Order  
**Grades 6-8:** White, Blue

Youth 14-20 \$32.95  
Adult XS-XL \$34.95

### Unisex, grades: K-8 ATHLETIC JACKET



Dark Grey Lightweight Full Zip  
Includes school crest

Youth XS-XL \$42.95  
Adult XS-XXL \$48.95

### Unisex, grades: K-8 POLO SHORT SLEEVE



**Grades K-5:** Light Blue, White, Navy  
Light Yellow\* Special Order

**Grades 6-8:** Navy, Red, White

Youth XXS-XL \$23.95  
Adult S-XL \$28.95

Includes school crest

### Unisex, grades K-8 POLO LONG SLEEVE



**Grades K-5:** Light Blue, Navy,  
Light Yellow\* Special Order

**Grades 6-8:** Navy, Red, White

Youth XS-XL \$27.95  
Adult S-XL \$30.95

Includes school crest

### Unisex, grades K-8 DRY FIT POLO S/S



**Grades K-5:** Light Blue, Navy, White  
**Grades 6-8:** Navy, Red, White

Youth XXS-XL \$30.95  
Adult S-XL \$33.95

Includes school crest \* Special order (Approx. 2 week delivery)

### Unisex, grades: K-8 CARDIGAN



Navy Classic V-Neck Cardigan  
Includes school crest

Youth XS-XL \$43.95  
Adult S-XL \$47.95

### Unisex, grades: K-8 SWEATER



Navy Fine Gauge V-Neck Pullover  
Includes school crest

Youth XS-XL \$39.95  
Adult S-XL \$43.95

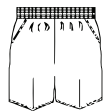
### Unisex, grades: K-8 SWEATER VEST



Navy Sweater Vest  
Includes school crest

Youth XS-XL \$32.95  
Adult S-XL \$34.95

### Unisex, grades: K-5 ELASTIC SHORTS



Navy, Khaki Twill Pull-On Shorts  
Elastic Waist

Youth XXS-M \$20.95

### Male, grades: K-8 SHORTS



Navy, Khaki Relaxed Fit Plain Front  
Adjustable Waist

Regular or Slim 3-20 \$27.95  
Husky 27-36H \$29.95  
Mens 28-48 \$29.95

### Male, grades: K-8 PANTS



Navy, Khaki Relaxed Fit Plain Front  
Adjustable Waist

Regular or Slim 3-20 \$30.95  
Husky 27-36H \$32.95  
Mens 28-40 \$32.95

### ACCESSORIES

May be purchased through Anton but are not required

See Handbook for specific guidelines

**Socks**  
Navy, White, Gray, Brown, Tan, Black

- Must be solid color
- No insignia or slogans
- Ankle or knee high

**Belt**  
Black or Brown (Solid Color)  
\*Required for middle school only

**Shoes**  
White, Black, Gray, Brown, Tan, Navy

- Athletic, deck, loafers, ballet flats
  - Solid colors
  - Closed toe with non-slip soles
- Athletic shoes - including logo - must be uniform colors (no neon)

**Hair Accessories**  
Elementary:  
Solid Navy, Light Blue, White, Maize, Gray, or Anton's Plaid  
Middle School:  
Solid Navy, Light Blue, White, Gray, or Anton's Plaid  
• Brown or black elastic bands acceptable

### Unisex, grades: K-8 TIE



Plaid Tie  
57" Only  
\$18.95

All prices are subject to change.






# Suggested Shopping List

*Quantities are suggested based on how many loads of laundry your family does per week.*



= 1 load of laundry per week

PRODUCT	SUGGESTED QTY			HAVE	NEED	SIZE	COLOR
							
Pants	5-6	3-4	2-3				
Shorts	5-6	3-4	2-3				
Skirts/Skorts	4	3	1-2				
Jumpers/Dresses	4	3	1-2				
Short Sleeve Tops	6-8	3-5	2-3				
Long Sleeve Tops	6-8	3-5	2-3				
Sweaters/Sweatshirts	4-6	2-3	1-2				
Jackets/Fleece	2-3	1-2	1				
Socks	6-8	3-5	2-3				
Tights	3-4	2-3	1-2				
Bike Shorts/Leggings	3-4	2-3	1-2				

*Suggestions are based on online research and 10+ years of school uniform experience!*