

# ANTON UNIFORMS

905 N. Scottsdale Rd • Tempe, AZ 85281 • 480-968-6636



Shop now at our website! [AntonUniforms.com](http://AntonUniforms.com)



## CANDEO NORTH SCOTTSDALE UNIFORM GUIDE for 2023-24

Featuring full school collections and helpful resources like our **Sizing & Fit Chart** and our **Suggested Shopping Guide!**

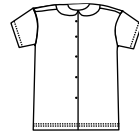
### Female, grades: K-8 POLO SHORT SLEEVE



White, Navy, Wine Pique  
*Includes school crest*

Youth XS-XL \$23.95  
Adult S-XL \$28.95

### Female, grades: K-5 PETER PAN BLOUSE



White Short Sleeve with Collar  
*No Patch  
Can only be worn with Jumper*

Youth XXS-XL \$20.95

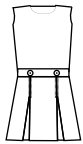
### Female, grades: K-5 PETER PAN BLOUSE



White Long Sleeve with Collar  
*No Patch  
Can only be worn with Jumper*

Youth XXS-XL \$22.95

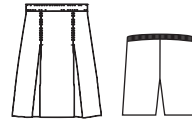
### Female, grades: K-3 JUMPERS



Plaid Jumper with Kick Pleats  
*Length must be at the knee*

Sizes 3-12 \$47.95

### Female, grades K-8 SKIRT + BIKE SHORTS

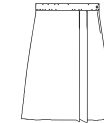


Plaid Skirt, Navy Shorts  
*Length must be at the knee*

Youth Shorts \$13.25  
Adult Shorts \$16.25

Both items guaranteed for 1 full academic year  
Skirt Sizes 3-18 \$47.95  
Skirt Sizes 6-18H \$49.95

### Female, grades: K-8 SKORTS



Plaid Skort  
*Length must be at the knee*

Sizes 3-18 \$49.95  
Sizes 7-14H \$52.95

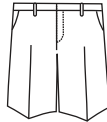
### Female, grades: K-8 CARDIGAN



Navy Fine Gauge Crewneck  
*Includes school crest*

Youth XXS-XL \$43.95  
Adult S-XL \$47.95

### Female, grades: K-8 SHORTS



Navy, Khaki Plain Front Shorts

Regular or Slim 3-6X \$27.95  
Regular or Slim 7-16

### Female, grades: K-8 PANTS



Navy, Khaki Plain Front

Regular or Slim 3-6X \$30.95  
Regular or Slim 7-16

### Female, grades: K-8 OXFORD



White Long Sleeve Oxford  
*Includes school crest*

Youth 4-16 \$32.95  
Adult S-XL \$34.95

### Male, grades: K-8 OXFORD



White Long Sleeve Oxford  
*Includes school crest*

Youth 4-16 \$32.95  
Adult S-XL \$34.95

### Unisex, grades: K-8 ATHLETIC JACKET



Dark Grey Lightweight Full Zip  
*Includes school crest*

Youth XS-XL \$42.95  
Adult S-XL \$48.95

### Unisex, grades: K-8 POLO SHORT SLEEVE



White, Navy, Wine Pique  
*Includes school crest*

Youth XS-XL \$23.95  
Adult S-XL \$28.95

### Unisex, grades K-8 POLO LONG SLEEVE



White, Navy, Wine Pique  
*Includes school crest*

Youth XS-XL \$27.95  
Adult S-XL \$30.95

### Unisex, grades: K-8 DRY FIT POLO S/S



White, Navy, Wine Jersey Knit  
*Includes school crest*

Youth XS-XL \$30.95  
Adult S-XL \$33.95

### Unisex, grades: K-8 CARDIGAN



Navy Classic V-Neck Cardigan  
*Includes school crest*

Youth XS-XL \$43.95  
Adult S-XL \$47.95

### Unisex, grades: K-8 SWEATER



Navy Fine Gauge V-Neck Pullover  
*Includes school crest*

Youth XS-XL \$39.95  
Adult S-XL \$43.95

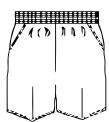
### Unisex, grades: K-8 SWEATER VEST



Navy Sweater Vest  
*Includes school crest*

Youth XS-XL \$32.95  
Adult S-XL \$34.95

### Unisex, grades: K-5 ELASTIC SHORTS



Navy, Khaki Twill Pull-On Shorts  
*Elastic Waist*

Youth XXXS-L \$20.95

### Male, grades: K-8 SHORTS



Navy, Khaki Relaxed Fit Plain Front  
*Adjustable Waist*

Regular or Slim 3-16 \$27.95  
Husky 27-36H \$29.95  
Mens 28-48 \$29.95

### Male, grades: K-8 PANTS



Navy, Khaki Relaxed Fit Plain Front  
*Adjustable Waist*

Regular or Slim 3-16 \$30.95  
Husky 27-36H \$32.95  
Mens 28-40 \$32.95

### ACCESSORIES

May be purchased through Anton but are not required

See Handbook for specific guidelines

**Socks**  
Navy, White, Gray, Brown, Tan, Black  
• Must be solid color  
• No insignia or slogans  
• Ankle or knee high

**Shoes**  
• Solid colors: White, Black, Gray, Brown, Tan, Navy, Burgundy  
• Athletic, tennis, deck, loafers, ballet flats  
• No boots  
• Closed toe with non-slip soles  
• Athletic shoes - including logo - must be uniform colors (no neon)

**Hair**  
Solid Navy, White, Wine, Gray or Anton's Plaid  
• Brown or black elastic bands acceptable  
**Belt**  
Solid Dark Color  
*\*Required for middle school only*

### Unisex, grades: K-8 TIE



Plaid Tie  
57" Only

\$18.95

All prices are subject to change.






# Suggested Shopping List

*Quantities are suggested based on how many loads of laundry your family does per week.*



= 1 load of laundry per week

PRODUCT	SUGGESTED QTY			HAVE	NEED	SIZE	COLOR
	 5-6	 3-4	 2-3				
Pants	5-6	3-4	2-3				
Shorts	5-6	3-4	2-3				
Skirts/Skorts	4	3	1-2				
Jumpers/Dresses	4	3	1-2				
Short Sleeve Tops	6-8	3-5	2-3				
Long Sleeve Tops	6-8	3-5	2-3				
Sweaters/Sweatshirts	4-6	2-3	1-2				
Jackets/Fleece	2-3	1-2	1				
Socks	6-8	3-5	2-3				
Tights	3-4	2-3	1-2				
Bike Shorts/Leggings	3-4	2-3	1-2				

*Suggestions are based on online research and 10+ years of school uniform experience!*